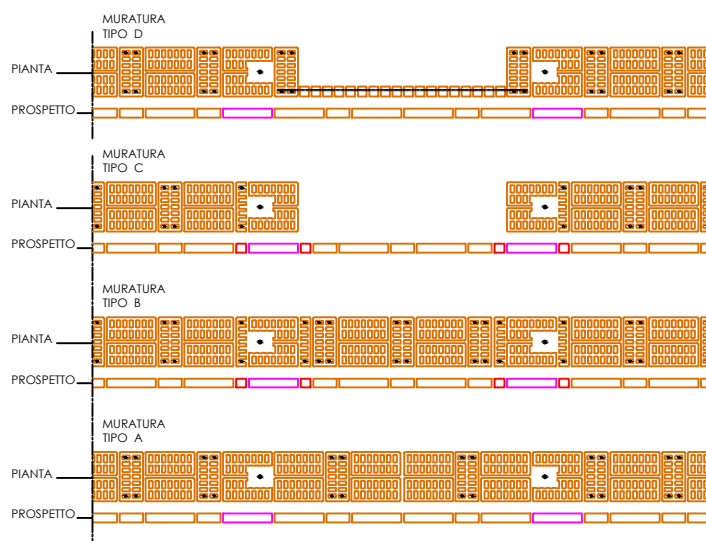
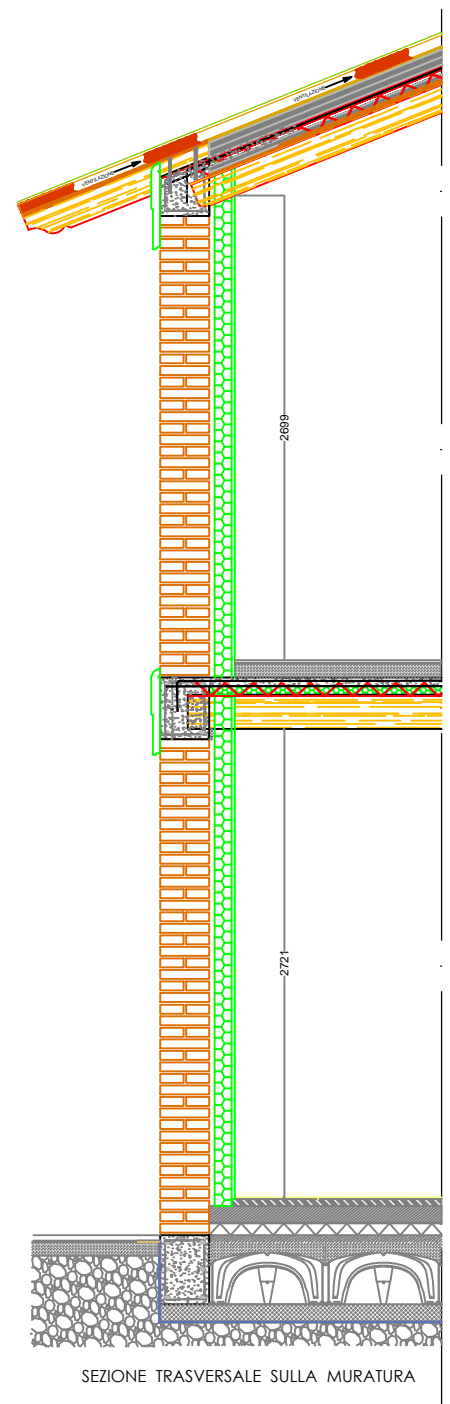
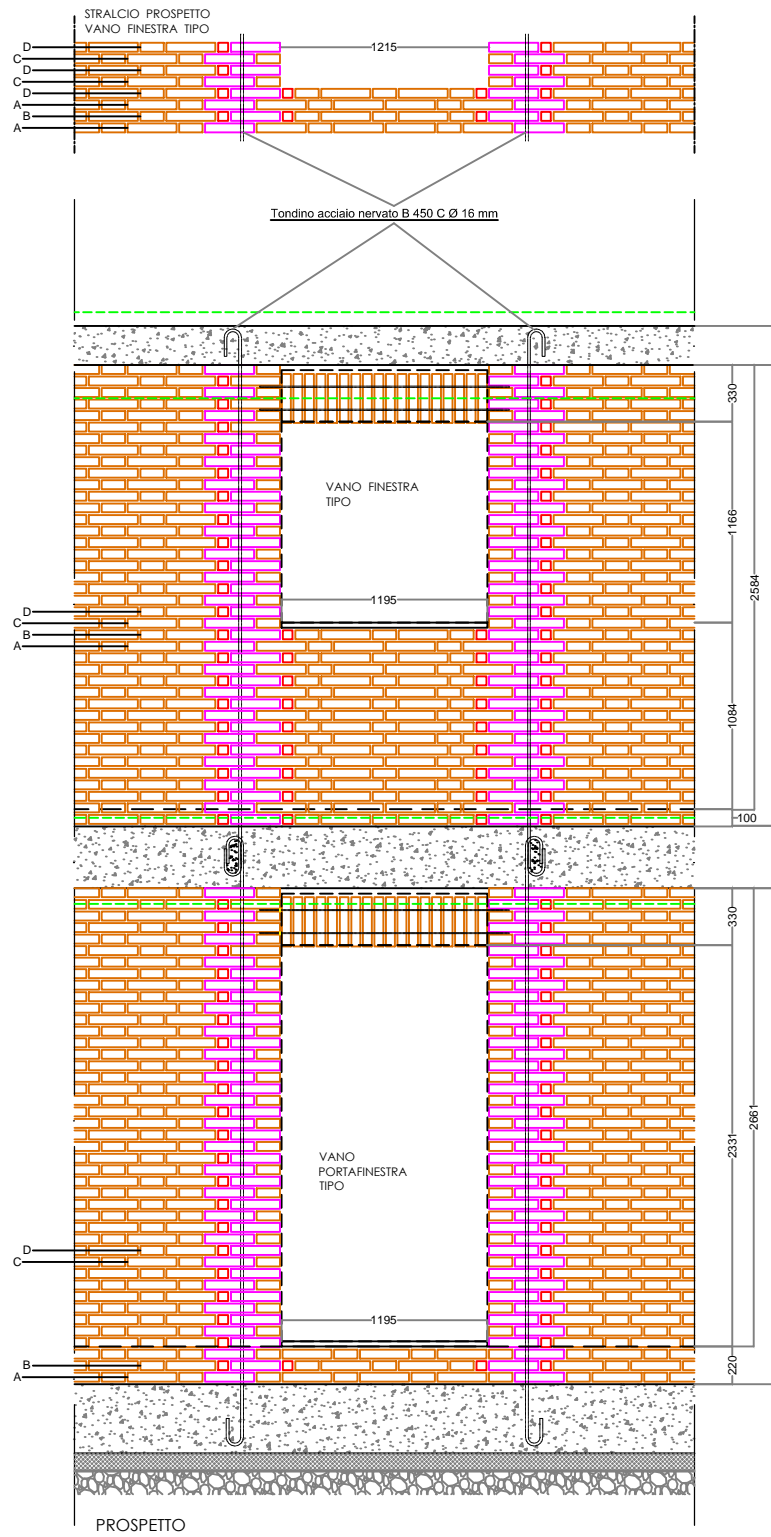
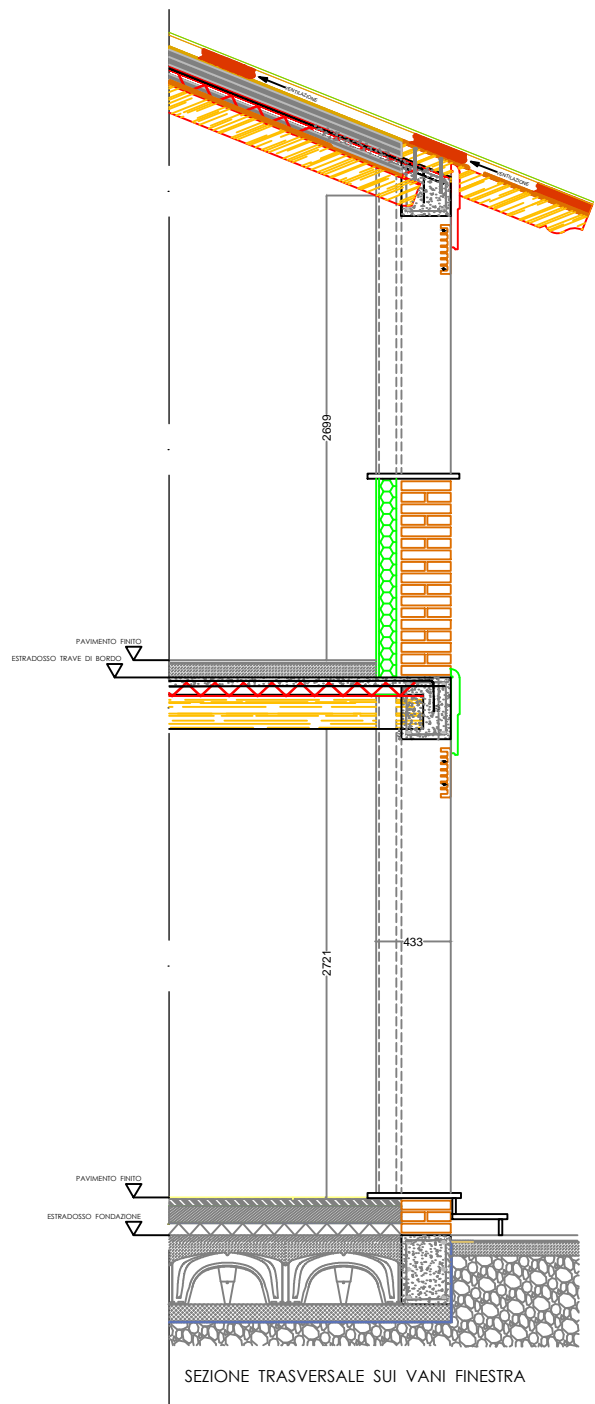
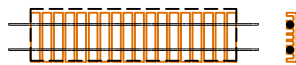


BREVETTATO  
**MURO**  
**ARMALATER**<sup>®</sup>  
 Laterizio Armato Antisismico

Muratura portante isodoma antisismica, composta da elementi in laterizio della tipologia "mattoni semipieni klinker", armata in maniera diffusa con spinotti in acciaio antiscorrimento a sovrapposizione sfalsata e calandri fiduciarì tralicciati.

Veletta prefabbricata armata con n°2 Ø 10 mm



**Particolare muratura vani finestra / porta**